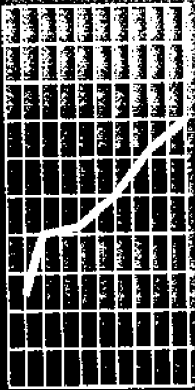
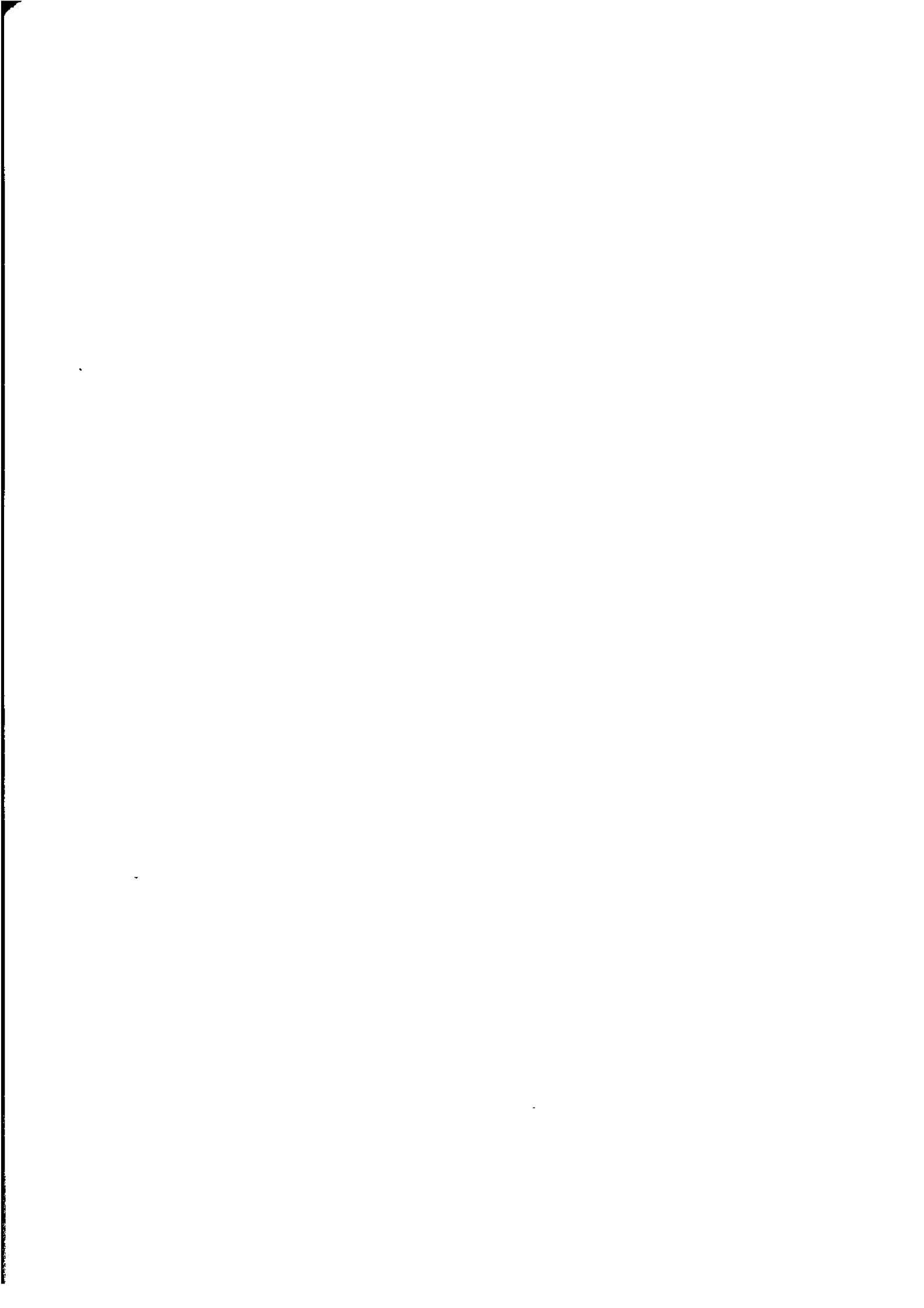




October 1995

# Monthly Summary of Statistics Victoria





EMBARGOED UNTIL 11:30 AM 17 NOVEMBER 1995

**MONTHLY SUMMARY OF STATISTICS,  
VICTORIA  
October 1995**

**Stuart Jackson  
Deputy Commonwealth Statistician**

© Commonwealth of Australia 1995

## CONTENTS

Table	Page
Notes	4
Symbols and other usages	4
Selected features	5
<b>ECONOMIC INDICATORS</b>	
1 Victoria in relation to other States and Australia	6
2 Economic Indicators, Victoria and Australia	7
<b>DEMOGRAPHY</b>	
3 Estimated resident population	10
4 Births, deaths, and marriages	10
<b>LABOUR</b>	
5 Labour force status of the civilian population aged 15 years and over	11
6 Employed persons by industry	12
7 Job vacancies	13
8 Industrial disputes causing stoppage of work	13
<b>WAGES AND PRICES</b>	
9 Average weekly earnings, all employees	13
10 Consumer price index, Melbourne, weighted average of eight capital cities	14
11 Price index of materials used in building, Melbourne, weighted average of six capital cities	14
<b>PRODUCTION</b>	
12 Livestock slaughterings	15
13 Meat production	15
<b>BUILDING</b>	
14 Building approvals, Melbourne and Victoria	16
15 New houses and other residential buildings: number of dwelling units	17
16 Value of building	17
<b>FINANCE</b>	
17 Statement of Budget Sector transactions	18
18 Actual private new capital expenditure by industry group and type of asset	19
19 Commercial finance commitments	19
20 Housing finance for owner occupation, secured loans to individuals by type of lender	20
<b>TRADE</b>	
21 Retail sales by industry (excl. motor vehicles, parts, petrol, etc.)	20
22 Exports and imports by sections of the Australian Export and Import Commodity Classifications	21
23 Overseas trade, major trading partners	21
24 Value of overseas trade, Victoria and Australia	22
<b>TOURISM</b>	
25 Tourist accommodation, Melbourne and Victoria	22
<hr/>	
INQUIRIES	<ul style="list-style-type: none"> <li>▪ for further information about statistics in this publication and the availability of related unpublished statistics, please contact Information Services on Melbourne (03) 9615 7000 or any ABS State office.</li> <li>▪ for information about other ABS statistics and services, please refer to the back page of this publication.</li> </ul>

## NOTES

The aim of this publication is to provide users with a range of the latest statistics available at the end of each month of issue. Consequently the dates and periods shown are not always the same for each table, but are in each case the latest figures available at that time.

- Seasonal adjustment** Seasonal adjustment is a means of removing the estimated effects of normal seasonal variations from economic time series so the the effects of other influences are obvious. Seasonal variations are the systematic (though not necessarily regular) intra-year movements of economic time series. These are often the result of non-economic phenomena, such as climatic changes, and regular religious festivals e.g. Christmas and Easter.
- Trend Estimate** Smoothing seasonally adjusted series produces a measure of trend by removing the impact of the irregular component of the series. The trend estimates are derived by applying a 13-term Henderson weighted moving average to the respective seasonally adjusted series. Readers are reminded that trend estimates are subject to revision as subsequent months' data become available.
- Symbols and other usages** In this publication -  
 r figure or series revised since previous issue  
 p preliminary

## FURTHER REFERENCES

- | Table  | Table   |
|--|---|
| 3. <i>Australian Demographic Statistics</i> (3101.0) (quarterly)   | 14. <i>Building Approvals, Victoria</i> (8731.2) (monthly)  |
| 4. <i>Demography, Victoria</i> (3311.2) (annual)   | 15.) <i>Building Activity, Victoria</i> (8752.2)  |
| 5. <i>The Labour Force, Victoria</i> (6202.2) (quarterly)  | 16.) (quarterly)  |
| 6. <i>The Labour Force, Australia</i> (6203.0) (monthly)   | 17. <i>Treasurer of Victoria - Statement of Budget Sector Transactions, Victoria</i>                          |
| 7. <i>Job Vacancies and Overtime, Australia</i> (6354.0) (quarterly)   | 18.) <i>State Estimates of Actual and Expected Private New Capital Expenditure</i> (5646.0) (quarterly)       |
| 8. <i>Industrial Disputes, Australia</i> (6321.0) (monthly)  | 20. <i>Housing Finance for Owner Occupation, Australia</i> (5609.0) (monthly)                                 |
| 9. <i>Average Weekly Earnings, States and Australia</i> (6302.0) (quarterly)   | 21. <i>Retail Sales of Goods (Excluding Motor Vehicles, Parts, Petrol, etc.) Australia</i> (8501.0) (monthly) |
| 10. <i>Consumer Price Index</i> (6401.0) (quarterly)   | 22. <i>Foreign Trade Australia: Fasttraccs Database</i>   |
| 11. <i>Price Index of Materials Used in Building Other Than House Building, Six State Capital Cities and Darwin</i> (6407.0) (monthly) | 23. <i>Overseas Trade: Fasttraccs Database</i>  |
| <i>Price Index of Materials Used in House Building, Six State Capital Cities</i> (6408.0) (monthly)                                    | 24. <i>Overseas Trade: Tables MMO3A and MXO3A (microfiche)</i>  |
| 12.) <i>Livestock Products, Australia</i> (7215.0)   | 25. <i>Tourist Accommodation, Victoria</i> (8635.2) (quarterly)   |
| 13.) (monthly)   |   |

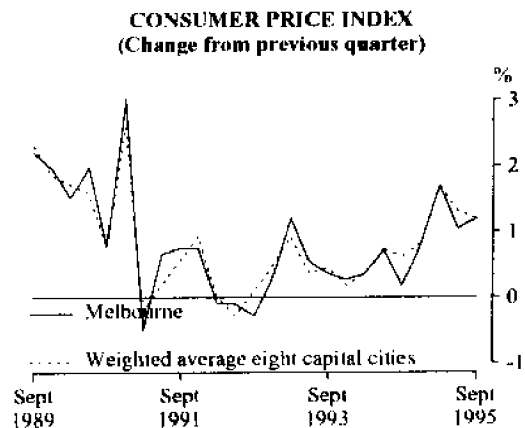
As at October 1995. Publication names and catalogue numbers are subject to revision or change.

## SELECTED FEATURES

### Consumer Price Index

The consumer price index for Melbourne increased by 1.2 per cent for the September quarter 1995. This makes the annual increase 4 per cent to September 1995.

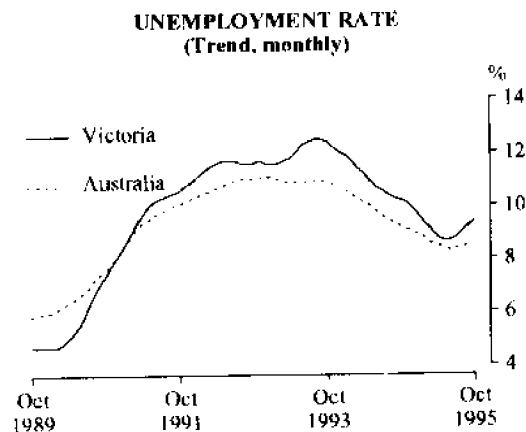
The CPI for the weighted average of the eight capital cities increased by 1.2 per cent for the September quarter 1995, which is slightly less than the 1.3 per cent increase for the June quarter 1995.



### Unemployment Rate

The trend estimate of the unemployment rate for Victoria increased to 9.4 per cent in October 1995 from 8.6 per cent in August 1995.

For Australia the trend unemployment rate increased by 0.3 per cent to 8.5 per cent in October 1995 from 8.2 per cent in August 1995.



# 1 VICTORIA IN RELATION TO OTHER STATES AND AUSTRALIA, OCTOBER 1995

Indicator(a)	Unit	Reference period	NSW	Vic.	Qld	SA	WA	Tas.	Aust.(b)
NUMBER									
Employed persons (c)	'000	Oct 95	p 2,792	p 2,032	p 1,494	p 651	p 829	p 201	p 8,224
Unemployment rate									
- trend estimate	%	Oct 95	p 7.6	p 9.4	p 9.7	p 9.6	p 7.3	p 9.1	p 8.5
Average weekly total earnings									
- all employees (e)	\$	May qr 95	573.20	558.50	501.20	513.30	539.90	500.70	548.10
Consumer price index all groups	1989-90=100	Sep qr 95	117.3	117.6	117.9	120.1	115.6	118.4	117.6
Exports (excludes re-exports)	\$m	Sep 95	1,283	1,137	1,295	282	1,624	106	5,913
Imports	\$m	Sep 95	2,861	1,999	666	204	496	32	6,285
Retail turnover - trend estimate	\$m	Sep 95	3,496	2,268	1,834	776	1,012	236	9,925
New motor vehicle registrations									
- trend estimate	no.	Sep 95	17,647	12,305	9,830	3,433	5,206	1,155	51,190
New capital expenditure									
- seasonally adjusted	\$m	Jun qr 95	3,158	2,100	1,422	474	1,950	165	9,387
New dwelling units approved									
- trend estimate	no.	Sep 95	3,645	2,088	2,496	573	1,357	230	10,560
Value of all buildings approved	\$m	Sep 95	755	490	490	88	217	41	2,147
Housing finance for owner occupation (f)	\$m	Sep 95	1,300	737	701	251	451	70	3,604
CHANGE OVER PREVIOUS PERIOD (%)									
Employed persons (c)		Oct 95	p 0.1	p -0.4	p -0.9	p -0.7	p 0.3	p 0.2	p -0.4
Unemployment rate									
- trend estimate (d)		Oct 95	p 0.0	p 0.2	p 0.2	p 0.0	p 0.0	p -0.1	p 0.1
Average weekly total earnings									
- all employees (e)		May qr 95	0.2	-0.5	1.0	2.8	0.5	-0.4	-
Consumer price index all groups		Sep qr 95	1.6	1.2	0.9	1.1	0.6	1.1	1.2
Exports (excludes re-exports)		Sep 95	13.7	2.4	3.3	-13.3	17.2	12.9	1.9
Imports		Sep 95	7.0	10.5	1.7	32.0	0.5	25.1	8.2
Retail turnover - trend estimate		Sep 95	0.7	0.3	0.3	0.6	1.0	0.4	0.5
New motor vehicle registrations									
- trend estimate		Sep 95	-2.4	-1.1	2.7	1.7	1.8	1.1	2.0
New capital expenditure									
- seasonally adjusted		Jun qr 95	r 11.3	r 6.4	r 4.5	r 2.5	r 15.3	r -14.9	7.7
New dwelling units approved									
- trend estimate		Sep 95	1.9	0.7	3.9	1.5	0.9	1.2	-1.7
Value of all buildings approved		Sep 95	21.1	14.8	-16.5	7.0	7.3	-7.3	11.0
Housing finance for owner occupation (f)		Sep 95	0.7	2.4	2.5	2.1	3.1	2.6	1.1
CHANGE OVER SAME PERIOD PREVIOUS YEAR (%)									
Employed persons (c)		Oct 95	p 4.2	p 1.9	p 2.7	p 0.7	p 3.0	p 2.6	p 2.8
Unemployment rate									
- trend estimate (d)		Oct 95	p 1.3	p 0.9	p 0.7	p -0.7	p -0.4	p 1.8	p -0.7
Average weekly total earnings									
- all employees (e)		May qr 95	4.4	4.5	1.9	1.7	6.3	0.3	3.1
Consumer price index all groups		Sep qr 95	5.7	4.8	4.8	4.5	5.0	4.5	5.1
Exports (excludes re-exports)		Sep 95	4.6	15.5	17.9	-16.8	32.6	67.4	16.5
Imports		Sep 95	5.5	4.4	3.5	-11.9	18.4	31.0	4.6
Retail turnover - trend estimate		Sep 95	7.8	7.6	8.0	12.9	7.1	2.3	8.0
New motor vehicle registrations									
- trend estimate		Sep 95	6.4	3.5	0.7	2.1	-1.7	5.0	1.2
New capital expenditure									
- seasonally adjusted		Jun qr 95	10.2	20.4	33.4	23.5	13.5	10.0	17.0
New dwelling units approved									
- trend estimate		Sep 95	-25.9	24.5	-44.5	-40.8	36.8	-22.2	-34.0
Value of all buildings approved		Sep 95	18.0	15.4	-13.5	-29.4	16.0	11.1	-11.0
Housing finance for owner occupation (f)		Sep 95	-1.0	8.0	5.0	-1.5	9.8	11.6	3.8

(a) All figures are original unless otherwise stated. (b) The Australian total includes figures for NT and the ACT, and where applicable, Tasmania. (c) Seasonally adjusted. (d) Change is shown in terms of percentage points. (e) Available only for the middle of the quarter. (f) Trend estimate. All lenders, excludes alterations and additions, to residential buildings.



Indicator	Unit	Reference period	Latest figure	Victoria		Australia		Victoria as a % of Australia	
				Change over preceding period (%)	Change over previous year (a) (%)	Change over preceding period (%)	Change over previous year (a) (%)		
<b>Population -</b>									
Estimated resident population	'000	Mar qr 95	p 4,496	p 0.2	p 0.5	p 18,001	p 0.4	p 1.1	p 25.0
Civilian population aged 15 years and over	'000	Oct 95	p 3,563	p 0.1	p 0.9	p 14,189	p 0.1	p 1.4	p 25.1
<b>Labour force -</b>									
<b>Labour force</b>									
- original	'000	Oct 95	p 2,248	p 1.2	p 1.7	p 9,002	p 1.1	p 2.4	p 25.0
- seasonally adjusted	'000	Oct 95	p 2,251	p 0.0	p 1.7	p 9,012	p 0.1	p 2.4	p 25.0
- trend estimate	'000	Oct 95	p 2,254	p 0.1	p 1.9	p 9,024	p 0.0	p 2.3	p 25.0
<b>Participation rate</b>									
- original series	%	Oct 95	p 63.1	..	..	p 63.4	..	..	..
- seasonally adjusted	%	Oct 95	p 63.2	..	..	p 63.5	..	..	..
- trend estimate	%	Oct 95	p 63.3	..	..	p 63.6	..	..	..
<b>Unemployment rate</b>									
- original series	%	Oct 95	p 9.0	..	..	p 8.2	..	..	..
- seasonally adjusted	%	Oct 95	p 9.7	..	..	p 8.7	..	..	..
- trend estimate	%	Oct 95	p 9.4	..	..	p 8.5	..	..	..
<b>Employed persons by industry (b)</b>									
<b>Agriculture, forestry, fishing etc. (c)</b>									
Mining	'000	Aug qr 95	6	19.5	-6.1	85	4.7	-2.1	7.3
Manufacturing	'000	Aug qr 95	347	3.9	2.9	1,117	0.9	-0.2	31.1
<b>Electricity, gas &amp; water supply</b>									
Construction	'000	Aug qr 95	127	-4.4	8.2	595	1.7	4.4	21.3
Wholesale Trade	'000	Aug qr 95	126	-7.7	6.7	503	3.0	4.6	25.1
Retail Trade	'000	Aug qr 95	298	-0.6	-3.4	1,186	-1.1	2.1	25.1
<b>Accommodation, cafes &amp; restaurants</b>									
Transport & storage	'000	Aug qr 95	81	-0.6	17.5	386	2.0	6.7	20.9
Communication services	'000	Aug qr 95	85	7.5	-0.1	379	-1.8	2.2	22.5
Finance & insurance	'000	Aug qr 95	41	11.1	1.0	146	4.9	9.1	28.2
Property & business services	'000	Aug qr 95	87	0.8	0.7	317	1.1	1.8	27.5
<b>Government administration and defence</b>									
Education	'000	Aug qr 95	206	1.6	10.6	800	1.0	10.8	25.8
Health, community services (d)	'000	Aug qr 95	81	-8.8	2.4	376	1.6	8.9	21.6
Cultural & recreational services	'000	Aug qr 95	148	0.3	10.6	596	3.1	7.2	24.9
Personal & other services	'000	Aug qr 95	186	2.1	13.6	757	1.4	7.9	24.5
Total all industries	'000	Oct 95	p 2,046	p -1.1	p 0.8	p 8,263	p 0.9	p -0.1	p 24.8
<b>Job vacancies (b)</b>									
- original series	'000	Aug qr 95	10.6	3.9	-15.2	62.0	15.5	-9.8	17.1
<b>Overtime (b)</b>									
Average weekly hours per employee	hours	Aug qr 95	1.09	-17.4	-23.8	1.09	8.4	-14.8	..
Employees working overtime	%	Aug qr 95	15.7	-10.5	-17.0	16.0	3.8	-11.0	..
<b>Average weekly employee earnings (b)</b>									
Full-time adult - ordinary	\$	May qr 95	643.20	1.4	4.3	647.30	1.3	4.8	..
All employees - total	\$	May qr 95	558.50	-0.5	4.5	548.10	-	3.1	..
<b>Industrial disputes (e)</b>									
Working days lost per '000 employees	no.	Jul 95	80	-8.0	2.4	85	-1.2	6.3	..
<b>Overseas trade -</b>									
Imports	\$m	Sep 95	1,999	-10.5	4.4	6,285	8.2	4.6	31.8
Exports (f)	\$m	Sep 95	1,137	2.4	15.5	5,913	1.9	16.5	19.2
<b>Tourism -</b>									
<b>Caravan parks - takings</b>									
Licensed hotels, motels & guest houses with facilities	\$'000	Jun 95	4,692	1.5	6.3	34,323	7.8	5.5	13.7
<b>- Takings</b>									
- room occupancy rate	%	Jun 95	37,582	-7.8	15.9	239,188	-5.1	12.3	15.7
		Jun 95	48	..	..	54	..	..	..

See footnotes at end of table.

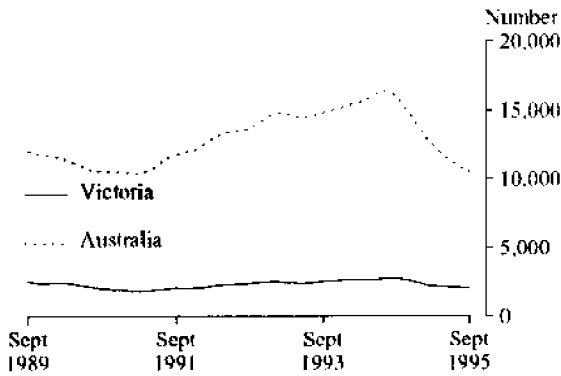
Indicator	Unit	Reference period	Victoria			Australia			Victoria as a % of Australia
			Latest figure	Change over preceding period (%)	Change over previous year (a) (%)	Latest figure	Change over preceding period (%)	Change over previous year (a) (%)	
<b>Consumer price index</b>									
All groups (1989-90=100)		Sep qr 95	117.6	1.2	4.8	117.6	1.2	5.1	..
<b>Retail trade establishments -</b>									
Value of turnover									
- original series	\$m	Sep 95	2,177	0.1	6.4	9,604	-	6.9	22.7
- seasonally adjusted	\$m	Sep 95	2,254	1.2	1.6	9,846	-1.6	2.7	22.9
- trend estimate	\$m	Sep 95	2,268	0.3	7.6	9,925	0.5	8.0	22.9
<b>New motor vehicle registrations</b>									
New motor vehicle registrations									
- original series	no.	Sep 95	12,123	-11.4	5.5	49,285	9.0	2.3	24.6
- seasonally adjusted	no.	Sep 95	12,609	0.1	9.9	50,626	0.7	0.5	24.9
- trend estimate	no.	Sep 95	12,305	-1.1	3.5	51,190	2.0	-1.2	24.0
<b>Finance -</b>									
Personal finance commitments									
- total	\$m	Aug 95	677	-6.5	21.7	2,801	0.3	21.1	24.2
Commercial finance commitments									
- total	\$m	Aug 95	3,788	16.4	41.6	15,437	13.8	20.3	24.5
Lease finance commitments									
- total	\$m	Aug 95	112	-22.7	-1.6	548	10.4	12.1	20.4
<b>Housing finance for owner occupation -</b>									
Secured loans to individuals									
- number of dwelling units									
financed (g)(h)	no.	Aug 95	8,338	12.1	-16.9	34,085	6.2	14.2	24.5
- value of loans secured (g)(h)	\$m	Aug 95	794	10.3	11.4	3,501	4.1	10.4	22.7
Total number of dwelling units									
financed (i)(j)(k) trend	no.	Sep 95	8,270	2.7	-13.6	37,787	1.6	-8.3	21.9
Total value of loans									
secured (i)(j)(k) trend	\$m	Sep 95	737	2.4	-8.0	3,604	1.1	3.8	20.5
Loan purpose - All lenders (i)									
- Established dwellings (j)	\$m	Aug 95	657	12.0	4.1	2,986	5.2	-2.3	22.0
- Construction of dwellings	\$m	Aug 95	107	15.2	27.2	580	6.9	-25.1	18.5
- Newly erected dwellings	\$m	Aug 95	41	-0.3	4.7	191	4.2	-17.0	21.7
<b>Building approvals -</b>									
New dwelling units									
- original series	no.	Sep 95	2,131	1.6	21.6	10,922	5.2	-37.3	19.5
- seasonally adjusted	no.	Sep 95	2,207	14.0	17.1	10,758	4.0	34.3	20.5
- trend estimate	no.	Sep 95	2,088	0.7	24.5	10,560	1.7	34.0	19.8
Value of non-residential buildings									
- original series	\$m	Sep 95	228	26.0	90.3	865	22.5	53.4	26.3
Value of all buildings (h)									
- original series	\$m	Sep 95	490	14.8	15.4	2,147	-11.0	-11.0	22.8
<b>Building commencements -</b>									
New dwelling units, monthly	no.	Jun 95	1,734	-37.1	-31.8	n.a.	n.a.	n.a.	..
New dwelling units, quarterly	no.	Jun qr 95	6,773	5.4	14.2	35,949	1.9	-23.1	18.8
<b>Building activity -</b>									
Value of total building activity									
- commenced	\$m	Jun qr 95	1,280	-1.0	-31.7	6,459	-5.7	12.3	19.8
- done	\$m	Jun qr 95	1,502	13.1	2.4	6,972	9.1	1.4	21.5
- yet to be done	\$m	Jun qr 95	1,900	7.7	-13.2	9,475	-1.8	3.4	20.1
<b>Engineering construction -</b>									
Value of work by private sector									
- commenced	\$m	Jun qr 95	232	13.3	8.8	1,511	18.1	-12.9	15.4
- done	\$m	Jun qr 95	283	-7.1	-11.7	1,727	8.4	3.3	16.4
- yet to be done	\$m	Jun qr 95	466	8.0	14.1	3,666	0.1	29.9	12.7
Value of work by public sector									
- commenced	\$m	Jun qr 95	352	33.7	-1.4	1,419	23.6	10.4	24.8
- done	\$m	Jun qr 95	415	43.5	5.6	1,987	39.5	12.4	20.9
- yet to be done	\$m	Jun qr 95	107	27.5	48.1	1,122	-30.2	-6.2	9.5
<b>Manufacturing -</b>									
Actual private new capital expenditure									
- original series	\$m	Jun qr 95	816	16.4	15.7	-	-	-	-

See footnotes at end of table.

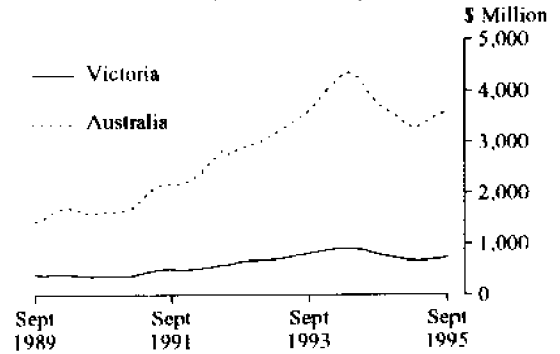
Indicator	Unit	Reference period	Victoria		Australia		Victoria as a % of Australia
			Latest figure	Change over preceding period (%)	Latest figure	Change over preceding period (%)	
Electricity - production	GWh	Oct 94	2,974	-1.3	13,505	-0.5	22.0
Gas - available for issue through mains	GJ	Oct 94	16,716	-24.8	53,231	-7.9	31.4
<b>Actual private new capital expenditure -</b>							
Building and structures							
- original series	\$m	Jun qr 95	471	r 31.4	2,427	r 9.0	19.4
Equipment, plant & machinery							
- original series	\$m	Jun qr 95	1,635	r 17.7	7,092	r 25.6	23.1
Total new capital expenditure							
- original series	\$m	Jun qr 95	2,106	r 20.5	9,519	r 20.9	22.1
- seasonally adjusted	\$m	Jun qr 95	2,100	r 6.4	9,387	7.7	22.4

(a) Change over same period previous year. (b) Available only for the middle month of the quarter. (c) Includes hunting. (d) Comprises health, libraries, etc., welfare institutions and other community groups. (e) 12 months ended. (f) Excludes re-exports. (g) All banks. (h) Includes alterations and additions to residential buildings. (i) Excludes alterations and additions to residential buildings. (j) Includes refinancing. (k) All lenders.

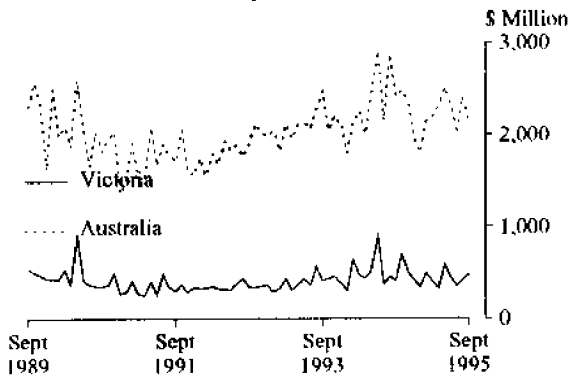
NEW DWELLING UNITS APPROVED  
(Trend, monthly)



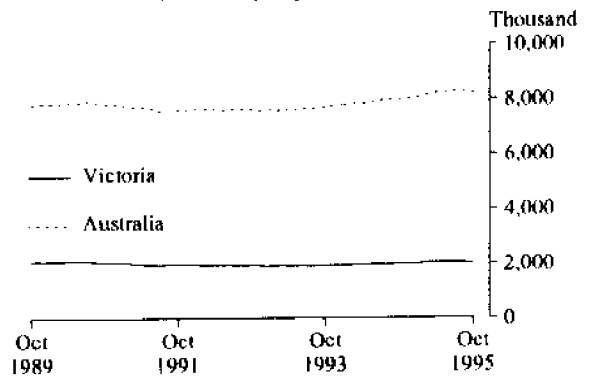
TOTAL VALUE OF SECURED HOUSING FINANCE COMMITMENTS TO INDIVIDUALS  
(Trend, monthly)



VALUE OF ALL BUILDINGS APPROVED  
(Original, monthly)



EMPLOYED PERSONS  
(Seasonally adjusted, monthly)



### 3 ESTIMATED RESIDENT POPULATION, VICTORIA

Period	At end of period			Increase during period		Mean estimated resident population for year ended		Melbourne Statistical Division at 30 June
	Males	Females	Persons	Natural '000	Total	30 June	31 Dec	
1991-92	2 206.5	2 244.6	4 451.0	33.4	30.6	4 437.1	4 450.3	r3 179.0
1992-93	2 211.6	2 252.6	4 464.2	33.6	13.1	4 459.6	4 464.9	r3 189.0
1993-94 r	2 216.4	2 259.1	4 475.5	32.4	11.3	4 469.6	4 477.4	3 198.2
1990 -								
December qr	2 183.0	2 217.7	4 400.7	8.8	9.5	..	..	..
1991 -								
March qr	2 189.0	2 224.4	4 413.4	8.9	12.7	..	..	..
June qr	2 192.1	2 228.3	4 420.4	8.3	7.0	..	..	..
September qr	2 196.4	2 233.2	4 429.6	8.2	9.2	..	..	..
December qr	2 198.6	2 236.6	4 435.2	8.4	5.6	..	..	..
1992 -								
March qr	2 203.9	2 241.8	4 445.7	9.2	10.5	..	..	..
June qr	2 206.4	2 244.5	4 451.0	8.0	5.3	..	..	..
September qr	2 208.6	2 247.3	4 455.8	8.2	4.8	..	..	..
December qr	2 209.8	2 249.7	4 459.4	8.5	3.6	..	..	..
1993 -								
March qr	2 212.0	2 252.5	4 464.4	8.8	5.0	..	..	..
June qr	2 211.6	2 252.6	4 464.2	8.1	-0.2	..	..	..
September qr r	2 212.4	2 254.1	4 466.5	7.7	2.3	..	..	..
December qr r	2 213.2	2 255.6	4 468.8	8.3	2.3	..	..	..
1994								
March qr r	2 215.5	2 257.8	4 473.2	8.8	4.4	..	..	..
June qr r	2 216.4	2 259.1	4 475.5	7.6	2.2	..	..	..
Sept qr r	2 219.0	2 262.0	4 481.0	6.8	5.6	..	..	..
Dec qr r	2 221.1	2 264.8	4 485.9	7.8	4.9	..	..	..
1995								
March qr p	2 226.2	2 270.1	4 496.3	8.9	10.4	..	..	..

### 4 BIRTHS, DEATHS, AND MARRIAGES, VICTORIA

Period	Number of registrations				Annual rate per 1,000 of mean estimated resident population			Infant deaths per 1,000 live births
	Births	Deaths	Infant deaths	Marriages	Births	Deaths	Marriages	
1991-92	65 478	31 447	390	28 567	14.71	7.05	6.41	5.93
1992-93	65 542	31 111	373	27 943	14.70	6.98	6.26	5.71
1993-94	64 542	31 778	345	27 316	14.44	7.11	6.11	5.35
1992 -								
March qr	16 798	7 624	97	9 302	..	..	..	..
June qr	16 179	8 097	79	6 430	..	..	..	..
September qr	16 695	8 418	98	4 179	..	..	..	..
December qr	16 378	7 777	97	8 518	..	..	..	..
Year - 1992	66 050	31 916	371	28 429	14.85	7.18	6.39	5.61
1993 -								
March qr	16 552	7 243	101	8 756	..	..	..	..
June qr	15 917	7 673	77	6 490	..	..	..	..
September qr	16 240	8 545	75	4 092	..	..	..	..
December qr	15 555	7 617	104	8 080	..	..	..	..
Year - 1993	64 264	31 078	357	27 418	14.38	6.96	6.14	5.57
1994 -								
March qr	16 685	7 564	85	8 862	..	..	..	..
June qr	16 062	8 051	81	6 282	..	..	..	..
September qr	16 037	9 144	91	4 149	..	..	..	..
December qr	15 498	7 556	81	7 681	..	..	..	..
Year - 1994	64 282	32 312	338	26 974	14.36	7.22	6.03	5.26
1995 -								
March qr	16 606	7 608	66	8 893	..	..	..	..
June qr	15 691	7 986	79	6 111	..	..	..	..
Sept qr p	15 663	8 745	63	3 882	..	..	..	..

# 5 LABOUR FORCE STATUS OF THE CIVILIAN POPULATION AGED 15 YEARS AND OVER, VICTORIA

Month	Employed		Unemployed looking for work			Labour force ('000)	Not in labour force ('000)	Civilian population 15 years and over ('000)	Unemployment rate (%)	Participation rate (%)
	Full-time ('000)	Total ('000)	Full-time ('000)	Part-time ('000)	Total ('000)					
<b>MALES</b>										
1994 -										
July	1 026.0	1 150.7	112.2	13.8	126.0	1 276.7	448.8	1 725.5	9.9	74.0
August	995.0	1 122.6	119.5	14.5	134.0	1 256.7	469.6	1 726.3	10.7	72.8
September	1 025.9	1 149.2	115.7	16.5	132.2	1 281.4	445.7	1 727.1	10.3	74.2
October	1 022.8	1 152.9	106.5	12.5	119.0	1 272.0	455.9	1 727.8	9.4	73.6
November	1 019.9	1 139.0	114.3	13.4	127.6	1 266.7	461.9	1 728.6	10.1	73.3
December	1 037.7	1 171.6	113.4	11.7	125.1	1 296.6	432.7	1 729.4	9.6	75.0
1995 -										
January	1 018.5	1 145.5	121.4	13.5	134.9	1 280.5	450.5	1 730.9	10.5	74.0
February	1 040.6	1 166.5	115.1	15.8	130.9	1 297.4	435.1	1 732.5	10.1	74.9
March	1 037.9	1 170.3	103.1	13.7	116.8	1 287.2	446.9	1 734.0	9.1	74.2
April	1 041.0	1 169.1	99.3	12.3	111.6	1 280.7	454.9	1 735.6	8.7	73.8
May	1 035.7	1 166.4	103.6	13.0	116.5	1 282.9	454.3	1 737.1	9.1	73.9
June	1 034.5	1 164.3	101.9	10.8	112.6	1 276.9	461.8	1 738.7	8.8	73.4
July	1 037.1	1 165.2	105.7	12.2	118.0	1 283.2	456.6	1 739.8	9.2	73.8
August	1 029.5	1 161.7	99.8	12.1	111.9	1 273.6	467.3	1 741.0	8.8	73.2
September	1 048.4	1 168.6	103.5	18.4	121.9	1 290.5	451.6	1 742.1	9.4	74.1
<b>FEMALES</b>										
1994 -										
July	476.5	854.1	62.6	29.4	92.0	946.1	854.2	1 800.3	9.7	52.6
August	466.2	838.0	65.6	29.1	94.7	932.6	868.6	1 801.2	10.1	51.8
September	490.7	868.8	61.3	34.5	95.8	964.6	837.6	1 802.1	9.9	53.5
October	471.6	854.7	59.2	23.9	83.0	937.7	865.3	1 803.0	8.9	52.0
November	475.2	841.5	60.7	23.7	84.4	926.0	877.9	1 803.8	9.1	51.3
December	483.0	854.3	68.6	29.1	97.7	952.0	852.8	1 804.7	10.3	52.7
1995 -										
January	478.1	818.2	75.6	25.0	100.7	918.9	887.3	1 806.1	11.0	50.9
February	486.2	849.6	70.1	32.0	102.1	951.6	855.9	1 807.6	10.7	52.6
March	491.2	876.2	62.1	32.7	94.8	971.0	838.0	1 809.0	9.8	53.7
April	489.6	877.8	56.3	26.9	83.1	960.9	849.7	1 810.6	8.7	53.1
May	498.8	892.0	58.9	21.5	80.4	972.4	839.8	1 812.1	8.3	53.7
June	504.9	898.3	53.3	23.7	77.0	975.4	838.3	1 813.7	7.9	53.8
July	520.4	909.4	50.4	23.8	74.1	983.5	831.5	1 815.1	7.5	54.2
August	505.5	888.9	49.8	23.1	72.9	961.8	854.7	1 816.5	7.6	52.9
September	500.9	900.5	57.0	28.5	85.6	986.0	831.8	1 817.8	8.7	54.2
<b>PERSONS</b>										
1994 -										
July	1 502.4	2 004.7	174.9	43.2	218.0	2 222.8	1 303.1	3 525.8	9.8	63.0
August	1 461.2	1 960.6	185.1	43.5	228.7	2 189.3	1 338.2	3 527.5	10.4	62.1
September	1 516.7	2 018.0	177.0	51.0	228.0	2 245.9	1 283.3	3 529.2	10.1	63.6
October	1 494.3	2 007.6	165.7	36.4	202.1	2 209.7	1 321.1	3 530.8	9.1	62.6
November	1 495.1	1 980.5	175.0	37.1	212.1	2 192.6	1 339.8	3 532.4	9.7	62.1
December	1 520.7	2 025.8	182.0	40.8	222.8	2 248.6	1 285.5	3 534.1	9.9	63.6
1995 -										
January	1 496.6	1 963.8	197.0	38.6	235.6	2 199.3	1 337.7	3 537.1	10.7	62.2
February	1 526.8	2 016.1	187.1	47.8	233.0	2 249.0	1 291.0	3 540.1	10.4	63.5
March	1 529.2	2 046.5	165.2	46.4	211.6	2 258.1	1 284.9	3 543.0	9.4	63.7
April	1 530.6	2 046.8	155.6	39.1	194.8	2 241.6	1 304.6	3 546.2	8.7	63.2
May	1 534.4	2 058.3	162.5	34.4	196.9	2 255.2	1 294.0	3 549.3	8.7	63.5
June	1 539.3	2 062.6	155.2	34.5	189.7	2 252.3	1 300.1	3 552.4	8.4	63.4
July	1 557.5	2 074.7	156.1	36.0	192.1	2 266.7	1 288.2	3 554.9	8.5	63.8
August	1 535.0	2 050.6	149.5	35.3	184.8	2 235.4	1 322.0	3 557.4	8.3	62.8
September	1 549.3	2 069.1	160.5	47.0	207.5	2 276.6	1 283.3	3 559.9	9.1	64.0

## 6 EMPLOYED PERSONS BY INDUSTRY<sup>1</sup>, VICTORIA

Industry division	May	Aug.	Nov.	Feb.	May	August
	1994	1994	1994	1995	1995	1995
	'000					
<b>MALES</b>						
Agriculture, Forestry and Fishing	64.3	61.2	61.0	62.9	57.5	58.8
Mining	*4.5	5.4	4.9	4.6	5.9	4.9
Manufacturing	243.1	245.1	256.3	257.5	243.8	251.6
Electricity, Gas and Water Supply	18.6	17.4	15.8	14.5	20.0	18.4
Construction	99.1	101.8	108.0	112.5	114.1	112.8
Wholesale Trade	97.4	84.2	85.7	91.7	95.0	86.1
Retail Trade	141.9	153.5	145.7	151.5	149.9	150.2
Accommodation, Cafes and Restaurants	32.0	28.5	32.5	39.3	37.3	34.5
Transport and Storage	73.2	62.3	66.2	72.5	72.8	70.0
Communication Services	22.8	26.1	32.7	30.6	24.9	27.5
Finance and Insurance	39.1	40.6	36.0	35.7	37.7	36.3
Property and Business Services	104.5	103.2	100.2	104.9	110.0	113.3
Government Administration and Defence	46.9	47.2	48.2	47.7	47.4	41.2
Education	45.2	45.9	45.6	46.3	48.7	50.4
Health and Community Services	38.5	39.0	38.2	38.3	42.3	42.0
Cultural and Recreational Services	18.6	21.0	22.1	19.7	24.0	26.8
Personal and Other Services	36.2	40.4	40.1	36.4	34.9	36.9
<b>Total</b>	<b>1 125.7</b>	<b>1 122.6</b>	<b>1 139.0</b>	<b>1 166.5</b>	<b>1 166.4</b>	<b>1 161.7</b>
<b>FEMALES</b>						
Agriculture, Forestry and Fishing	27.6	23.9	24.8	25.9	30.1	32.1
Mining	*2.0	*1.2	*0.3	*1.0	*1.8	*r1.3
Manufacturing	91.7	92.0	95.3	91.4	90.2	95.4
Electricity, Gas and Water Supply	*4.2	*3.8	*3.9	*3.0	*3.0	*3.8
Construction	16.6	15.7	18.9	19.6	18.8	14.2
Wholesale Trade	40.9	34.3	35.0	36.1	41.9	40.3
Retail Trade	148.7	155.1	155.7	155.5	150.1	148.0
Accommodation, Cafes and Restaurants	38.5	40.2	42.2	43.4	43.9	46.2
Transport and Storage	19.6	22.9	18.7	19.9	19.2	15.2
Communication Services	11.9	14.7	14.6	12.5	12.1	13.6
Finance and Insurance	47.7	47.3	45.7	46.3	48.8	51.0
Property and Business Services	74.8	83.1	75.5	84.3	92.8	92.8
Government Administration and Defence	35.2	35.9	39.7	37.2	41.5	39.9
Education	91.2	88.3	90.3	89.6	99.2	97.9
Health and Community Services	120.7	124.4	121.7	129.2	139.4	143.6
Cultural and Recreational Services	20.5	23.8	25.4	22.1	23.4	21.7
Personal and Other Services	46.2	31.3	33.9	32.5	36.0	31.9
<b>Total</b>	<b>838.0</b>	<b>838.0</b>	<b>841.5</b>	<b>849.6</b>	<b>892.0</b>	<b>888.9</b>
<b>PERSONS</b>						
Agriculture, Forestry and Fishing	92.0	85.2	85.8	88.8	87.6	90.9
Mining	6.5	6.6	5.2	5.6	7.7	6.2
Manufacturing	334.7	337.1	351.6	348.9	334.0	347.0
Electricity, Gas and Water Supply	22.8	21.2	19.7	17.5	23.0	22.1
Construction	115.8	117.4	127.0	132.2	132.9	127.0
Wholesale Trade	138.2	118.5	120.7	127.8	136.9	126.4
Retail Trade	290.7	308.6	301.4	307.0	300.0	298.2
Accommodation, Cafes and Restaurants	70.5	68.7	74.7	82.7	81.2	80.7
Transport and Storage	92.6	85.2	84.8	92.4	92.1	85.2
Communication Services	34.7	40.7	47.3	43.0	37.0	41.1
Finance and Insurance	86.7	87.9	81.7	82.0	86.6	87.3
Property and Business Services	179.3	186.3	175.7	189.2	202.7	206.0
Government Administration and Defence	82.1	83.1	87.9	85.0	88.9	81.1
Education	136.3	134.2	135.9	136.0	147.9	148.4
Health and Community Services	159.2	163.4	159.9	167.5	181.7	185.6
Cultural and Recreational Services	39.0	44.8	47.5	41.8	47.4	48.6
Personal and Other Services	82.3	71.7	74.0	68.9	70.9	68.9
<b>Total</b>	<b>1 963.6</b>	<b>1 960.6</b>	<b>1 980.5</b>	<b>2 016.1</b>	<b>2 058.3</b>	<b>2 050.6</b>

<sup>1</sup> From August 1994 industry data are classified according to the Australian and New Zealand Standard Industrial Classification (ANZSIC). Previous quarters' data have been backcast. See the Information Paper *Labour Force Survey: Introduction of ANZSIC for industry data (Replacement publication)(6259.0)* for details.

\* Subject to sampling variability too high for most practical uses.

## 7 JOB VACANCIES, VICTORIA

Month	Vacancies all persons ( <sup>'000</sup> )	Industry ( <sup>'000</sup> )		Sector ( <sup>'000</sup> )		Job vacancy rate %
		Manu- facturing	Other	Public	Private	
1993 -						
May	5.4	*0.6	4.8	1.2	*4.2	0.3
August	9.1	1.2	7.9	1.1	7.9	0.6
November	9.9	1.2	8.7	1.8	8.1	0.6
1994 -						
February	11.3	2.2	9.1	1.7	9.6	0.7
May	15.3	2.2	13.0	2.0	13.3	1.0
August	12.5	4.0	8.5	2.0	10.5	0.7
November	12.8	3.7	9.1	1.7	11.1	0.8
1995 -						
February	13.5	3.5	10.0	2.1	11.4	0.8
May	10.2	1.1	9.1	2.0	8.2	0.6
August	10.6	2.6	8.0	1.8	8.8	0.6

\* Subject to sampling variability too high for most practical uses.

## 8 INDUSTRIAL DISPUTES CAUSING STOPPAGE OF WORK, VICTORIA<sup>1</sup>

Period	Number of disputes		Workers involved ( <sup>'000</sup> )		Working days lost ( <sup>'000</sup> )					
	Beginning in period	Total	Beginning in period	Total	Manu- facturing	Education, Health, Community			Other industries	Total
						Con- struction	services	Other		
1994 -										
April	8	11	1.9	2.9	1.1	-	0.1	0.7	1.9	1.9
May	9	13	1.2	4.2	3.4	-	0.5	0.2	4.1	4.1
June	n.p.	3	-	0.1	0.2	-	-	-	0.2	0.2
July	11	11	5.8	5.8	2.8	-	-	14.6	17.4	17.4
August	10	11	1.8	2.5	2.2	0.4	-	2.0	4.6	4.6
September	8	9	15.8	15.9	2.6	1.6	3.0	5.0	12.2	12.2
October	12	15	11.3	12.3	8.8	-	1.2	5.1	16.1	16.1
November	14	15	3.3	3.3	7.9	-	0.1	1.4	9.4	9.4
December	13	15	7.2	7.4	1.6	-	0.6	14.8	17.0	17.0
1995 -										
January	5	r8	0.8	2.2	0.5	-	-	r2.2	r2.7	r2.7
February	16	r19	8.2	r8.4	6.0	0.1	0.9	r1.3	r8.3	r8.3
March	13	r17	3.2	r4.7	9.1	-	0.3	r0.6	r10.0	r10.0
April	11	r16	5.3	r6.6	2.6	1.6	-	r9.1	r13.3	r13.3
May	9	12	14.3	15.4	0.3	0.1	16.5	2.2	19.1	19.1
June	8	11	5.8	18.5	0.8	4.2	11.5	1.4	17.9	17.9
July	8	13	3.7	5.1	2.4	1.5	0.7	2.4	7.0	7.0

<sup>1</sup> As from January 1994 industry information is classified according to ANZSIC.

## 9 AVERAGE WEEKLY EARNINGS OF EMPLOYEES (ORIGINAL SERIES), VICTORIA

Reference period - pay period ending on or before	Males		Females		Persons	
	Full-time adults		Full-time adults		Full-time adults	
	Ordinary time earnings	All males Total earnings	Ordinary time earnings	All females Total earnings	Ordinary time earnings	All employees Total earnings
1994 -						
18 February	641.00	685.90	625.10	542.00	555.80	430.90
20 May	652.30	698.50	626.10	553.20	569.00	429.50
19 August	651.70	716.60	641.70	545.20	559.10	417.20
18 November	664.70	721.40	649.40	561.60	574.80	437.30
1995 -						
17 February	674.40	732.00	661.40	563.40	578.20	442.30
19 May	680.10	737.20	664.60	576.10	590.00	435.40

# 10 CONSUMER PRICE INDEX, MELBOURNE

Period	Melbourne									Eight capital cities All groups (weighted average)
	Food	Clothing	Housing	Household equipment and operation	Transportation	Tobacco and alcohol	Health and personal care	Recreation and education	All groups	
1992-93	106.3	107.8	93.1	108.3	112.7	122.7	129.8	110.8	108.9	108.4
1993-94	107.9	107.3	92.7	110.0	115.8	132.1	135.4	113.6	111.1	110.4
1994-95	112.3	110.1	97.5	111.1	118.8	137.3	142.4	116.7	114.1	113.9
1992 -										
June qr	106.0	107.5	95.5	108.9	110.1	117.2	127.5	108.9	108.2	107.3
September qr	105.5	106.8	93.3	107.8	112.0	118.0	127.2	109.2	107.9	107.4
December qr	105.5	108.3	92.3	108.6	112.0	118.8	128.5	110.2	108.2	107.9
1993 -										
March qr	107.3	107.7	92.4	108.2	113.1	126.4	131.5	112.0	109.5	108.9
June qr	107.0	108.4	94.5	108.7	113.7	127.7	132.1	111.9	110.1	109.3
September qr	107.8	107.9	93.8	109.0	115.0	129.8	131.9	112.2	110.5	109.8
December qr	108.1	107.5	92.4	109.3	115.8	131.7	132.9	113.3	110.8	110.0
1994 -										
March qr	107.8	106.7	92.2	110.8	114.9	133.0	137.4	114.1	111.2	110.4
June qr	107.9	106.9	92.4	110.8	117.5	134.0	139.2	114.8	112.0	111.2
September qr	108.6	107.0	92.7	110.3	118.4	134.0	139.8	114.9	112.2	111.9
December qr	108.8	107.4	95.0	110.9	118.5	134.7	140.8	116.4	113.1	112.8
1995 -										
March qr	111.2	107.0	100.4	111.5	118.5	137.1	143.4	117.9	115.0	114.7
June qr	111.7	108.2	102.0	111.8	119.9	143.5	145.5	117.5	116.2	116.2
September qr	113.5	107.7	102.4	112.5	122.4	149.5	146.0	118.0	117.6	117.6

(Base of each group: year 1989-90 = 100.0)

# 11 PRICE INDEX OF MATERIALS USED IN BUILDING, MELBOURNE

Group	1992-93	1993-94	1994-95	1995			Weighted average of six State capital cities (August)
				June	July	August	
House building (Base year: 1985-86 = 100.0)							
<b>All groups</b>	<b>141.1</b>	<b>149.6</b>	<b>154.7</b>	<b>155.0</b>	<b>155.1</b>	<b>154.8</b>	<b>157.8</b>
Other than house building (Base year: 1989-90 = 100.0) -							
Structural timber	103.2	119.5	123.0	123.0	121.2	120.6	124.4
Clay bricks	108.5	109.3	112.3	114.4	114.4	114.4	111.9
Ready mixed concrete	108.2	123.4	124.2	123.7	123.8	122.8	110.7
Precast concrete products	99.5	99.2	104.8	107.4	107.3	108.2	114.7
Steel decking and cladding	109.0	104.7	106.5	103.3	107.2	107.7	109.7
Structural steel	91.3	93.3	95.3	95.5	96.0	96.1	106.7
Reinforcing steel bar, mesh, etc.	99.2	102.0	101.8	100.2	103.9	103.9	112.8
Aluminium windows	96.0	96.5	98.8	100.4	100.8	100.8	108.7
Fabricated Steel Products <sup>1</sup>	108.4	109.4	110.7	111.9	113.0	111.9	110.7
Builders' hardware	117.2	116.2	113.7	115.1	115.2	115.0	119.1
Sand and aggregate	113.8	119.5	118.5	114.6	114.6	114.6	120.6
Carpet	98.8	98.3	98.5	98.7	100.0	100.2	101.1
Paint and other coatings	118.8	125.0	131.2	134.2	135.8	141.5	128.5
Non-ferrous pipes and fittings	90.9	86.5	100.8	105.3	111.4	111.4	129.7
All groups excluding electrical materials and mechanical services	103.4	106.6	108.5	108.9	109.4	109.5	112.0
All electrical materials	108.9	107.3	113.5	117.1	118.4	118.8	119.4
All mechanical services	105.5	106.8	108.9	110.4	111.8	112.4	112.5
All plumbing materials	104.0	105.3	112.6	115.0	116.8	117.9	123.1
<b>All groups</b>	<b>104.4</b>	<b>106.7</b>	<b>108.9</b>	<b>109.7</b>	<b>110.4</b>	<b>110.6</b>	<b>112.4</b>

<sup>1</sup> Previously 'Steel Windows, doors, louvres etc'.

<sup>2</sup> Commencing with this table, this Index has been compiled on the basis of a revised list of items and updated weighting pattern. The reference base of the index has been updated to 1989-90=100.0. See Appendices in October 1993 issue of Catalogue number 6407.0



## 12 LIVESTOCK SLAUGHTERINGS, VICTORIA

Period	Cattle	Calves	Sheep	Lambs	Pigs	Chickens
	'000					
1992-93	1 365.8	608.5	3 722.6	6 288.1	1 070.8	78,614.7
1993-94	1 393.9	583.4	3 975.9	5 600.8	1 188.5	85 797.9
1994-95 r	1 445.6	641.3	3 202.6	6 263.8	1 196.6	79 799.4
1994 -						
January	114.8	5.6	412.8	406.3	82.4	8 102.0
February	116.6	4.9	424.8	443.7	83.5	7 223.7
March	138.5	11.2	395.5	555.5	109.0	7 226.9
April	118.3	26.2	312.5	452.3	96.5	7 468.3
May	132.8	47.2	292.6	528.3	102.4	6 934.7
June	111.4	89.0	195.2	504.3	103.0	8 237.1
July	103.7	79.7	187.7	507.5	91.8	6 413.1
August	103.9	170.0	202.8	568.8	99.1	6 105.1
September	122.2	121.7	246.5	574.9	110.1	6 364.0
October	125.1	69.4	327.0	581.8	101.6	6 874.2
November	119.4	23.5	401.0	571.6	97.6	5 882.2
December	122.3	7.9	351.7	516.6	104.9	9 646.3
1995 -						
January	102.6	5.8	330.5	464.5	88.9	6 548.4
February	117.7	4.8	330.6	478.4	89.9	6 200.2
March	130.7	11.0	295.1	522.7	106.7	6 731.2
April	112.5	24.3	182.6	464.2	84.3	6 520.6
May	137.7	47.6	186.2	512.0	114.9	6 208.8
June	133.7	74.2	147.3	453.2	106.7	6 305.2
July r	113.5	81.6	150.0	449.5	87.9	6 528.3
August	114.0	137.0	160.7	494.8	100.5	5,966.2

## 13 MEAT PRODUCTION, VICTORIA

Period	Meat (carcass weight)					Dressed weight of poultry
	Beef	Veal	Mutton	Lamb	Pigmeat	
	tonnes					
1992-93	299 907	14 948	81 907	113 220	70 535	119 966
1993-94	315 279	13 466	85 010	101 386	78 488	129 234
1994-95 r	320 510	14 320	63 608	110 138	84 411	116 167
1994 -						
January	26 685	367	8 843	7 369	5 507	11 324
February	27 545	318	8 924	8 176	5 558	10 032
March	32 677	512	8 247	10 181	7 272	11 166
April	28 042	716	6 540	8 169	6 261	11 523
May	29 318	1 185	6 213	9 733	6 763	10 820
June	24 781	1 894	4 144	9 326	6 857	11 487
July	23 328	1 859	3 987	9 189	6 289	10 571
August	20 893	3 375	3 840	9 726	6 814	9 195
September	25 307	2 721	5 026	9 785	7 379	9 679
October	27 899	1 502	6 775	10 295	7 165	10 284
November	26 809	581	8 148	10 028	7 216	8 684
December	27 469	275	6 956	8 995	7 303	10 496
1995 -						
January	23 167	226	6 467	8 244	6 182	9 218
February	25 760	203	6 431	8 525	6 187	9 542
March	29 632	328	5 578	9 378	7 471	10 257
April	25 434	582	3 478	7 884	5 991	9 685
May	30 426	1 072	3 695	9 183	8 409	9 336
June	30 983	1 572	2 917	7 991	8 005	9 220
July	26 237	1 577	2 939	7 240	6 464	9 554
August	23 804	2 773	3 241	8 997	7 401	9 731

# 14 BUILDING APPROVALS

Period	New dwelling units <sup>1</sup>						Alterations and additions to residential buildings (a)	Non-residential building <sup>2</sup>		Total all building
	Private sector		Public sector		Total			Private sector	Total	
	No.	Value (\$'000)	No.	Value (\$'000)	No.	Value (\$'000)		Value (\$'000)	Value (\$'000)	
MELBOURNE STATISTICAL DIVISION										
1992-93	18 949	1 663 728	886	52 930	19 835	1 716 658	429 731	858 160	1 138 241	3 284 630
1993-94	20 798	1 925 655	999	71 616	21 797	1 997 271	509 231	1 619 834	2 138 618	4 645 121
1994-95	20 916	2 113 075	888	69 830	21 804	2 182 905	571 937	1 072 307	1 655 767	4 410 610
1994 -										
April	1 650	157 047	63	4 960	1 713	162 007	33 322	102 007	129 992	325 322
May	2 068	198 809	47	3 162	2 115	201 970	85 947	92 651	111 876	399 793
June	1 729	163 041	91	6 842	1 820	169 884	39 440	556 694	575 462	784 786
July	1 905	180 550	20	1 342	1 925	181 892	36 403	45 682	59 834	278 129
August	2 071	196 942	21	1 180	2 092	198 122	66 262	66 975	91 663	356 047
September	1 866	185 935	54	3 379	1 920	189 313	41 439	89 855	100 972	331 724
October	2 041	199 201	59	3 699	2 100	202 900	85 991	117 537	296 755	585 646
November	2 073	198 840	134	9 618	2 207	208 457	48 868	107 606	149 066	406 391
December	1 860	239 867	62	5 910	1 922	245 777	27 551	54 702	72 260	345 588
1995										
January	1 231	117 579	88	7 792	1 319	125 371	26 662	93 066	124 920	276 953
February	1 560	149 489	133	9 118	1 693	158 607	45 869	149 770	218 203	422 679
March	1 473	135 412	77	7 725	1 550	143 137	70 084	84 976	106 011	319 232
April	1 386	135 001	10	809	1 396	135 810	30 202	59 713	91 186	257 197
May	1 935	226 429	121	12 348	2 056	238 777	51 528	118 061	188 796	479 101
June	1 515	147 831	109	6 911	1 624	154 742	41 079	84 364	156 102	351 923
July	1 403	136 198	92	6 069	1 495	142 267	32 787	80 942	94 679	269 734
August	1 421	140 179	151	13 079	1 572	153 259	37 489	87 940	144 659	335 406
September	1 669	171 719	19	2 964	1 688	174 683	38 184	125 424	188 544	401 411
TOTAL VICTORIA										
1992-93	28 155	2 408 177	1 416	85 963	27 644	3 027 181	533 042	1 066 219	1 406 261	4 433 442
1993-94	27 750	2 718 022	1 414	99 663	31 750	2 817 685	623 548	1 853 551	2 502 670	5 943 903
1994-95	28 507	2 771 998	1 409	101 789	29 916	2 873 788	685 062	1 274 683	1 975 197	5 534 047
1994 -										
April	2 338	216 800	84	6 500	2 422	223 299	42 114	121 514	178 947	444 361
May	2 941	274 591	88	5 691	3 029	280 282	99 677	118 845	151 136	528 095
June	2 604	239 130	101	7 578	2 705	246 709	49 482	584 205	608 719	904 910
July	2 684	247 521	48	2 939	2 732	250 461	44 660	64 751	80 629	375 750
August	2 959	268 997	82	4 658	3 041	273 655	77 081	79 609	111 454	462 191
September	2 597	247 139	122	7 070	2 719	254 209	51 176	105 438	119 546	424 931
October	2 708	256 386	68	4 246	2 776	260 632	94 900	133 972	347 271	702 803
November	2 864	267 116	167	11 597	3 031	278 713	59 966	121 186	173 754	512 433
December	2 389	288 674	122	9 588	2 511	298 262	34 585	64 119	89 161	422 009
1995										
January	1 670	156 157	113	9 289	1 783	165 446	33 352	105 670	152 660	351 457
February	2 077	195 776	183	12 211	2 260	207 987	54 539	160 034	237 605	500 131
March	2 112	190 960	114	10 043	2 226	201 003	80 834	105 401	132 093	413 929
April	1 825	173 579	50	3 245	1 875	176 824	40 442	76 600	118 649	335 915
May	2 516	279 956	154	14 272	2 670	294 229	62 740	153 918	230 951	587 920
June	2 108	199 955	186	12 631	2 294	212 586	50 786	104 004	181 425	444 797
July	1 879	179 571	162	9 712	2 041	189 283	41 048	111 685	131 436	361 767
August	1 935	185 868	163	13 784	2 098	199 652	46 875	117 115	180 525	427 053
September	2 100	211 712	31	3 736	2 131	215 448	47 450	154 641	227 509	490 407

<sup>1</sup> Valued at \$10,000 and over.

<sup>2</sup> Valued at \$50,000 and over.

# 15 NEW HOUSES AND OTHER RESIDENTIAL BUILDINGS: NUMBER OF DWELLING UNITS, VICTORIA

	New houses				New other residential buildings			
	Approved	Commenced	Under construction	Completed	Approved	Commenced	Under construction	Completed
1992-93	27 158	25 734	11 805	25 083	2 438	2 413	2 022	2 566
1993-94	28 057	27 001	r12 362	r27 118	3 693	3 511	r2 355	r3 209
1994-95 p	25 883	25 830	11 228	26 838	4 033	3 600	2 834	2 811
1994 -								
Mar qr	6 784	6 688	12 331	5 988	1 020	1 144	2 249	533
Jun qr	7 234	7 009	12 362	6 925	922	882	2 355	750
Sept qr	7 792	7 087	12 534	6 915	700	701	2 439	613
Dec qr	7 033	7 521	11 931	8 006	1 283	909	2 259	995
1995 -								
Mar qr r	5 491	5 494	11 080	6 311	778	929	2 606	580
Jun qr p	5 567	5 718	11 228	5 537	1 272	1 055	2 834	534

# 16 VALUE OF BUILDING, VICTORIA

Period	Residential buildings		Non-residential building						Total
	New	Alterations and additions	Shops	Factories	Business premises \$m	Education	Health	Other	
COMMENCED									
1992-93	2 428.2	562.0	189.4	187.0	395.7	178.5	273.4	294.4	4 508.1
1993-94	2 876.5	700.0	456.6	227.1	666.9	211.2	240.0	727.4	6 105.7
1994-95	2 905.7	672.6	311.9	208.7	568.5	271.5	138.1	370.6	5 447.7
1994 -									
Jun qr	743.4	216.0	96.3	82.5	176.6	45.5	32.6	481.0	1 872.9
Sept qr	732.2	164.0	52.2	56.1	122.6	47.1	41.2	49.6	1 265.0
Dec qr	808.1	181.9	96.4	67.5	128.2	102.3	37.4	188.3	1 610.1
1995 -									
Mar qr r	666.7	156.8	111.3	36.9	183.0	49.3	30.4	58.6	1 292.9
Jun qr p	698.8	169.9	52.1	48.1	134.8	72.7	29.1	74.3	1 279.8
UNDER CONSTRUCTION AT END OF PERIOD									
1992-93	1 297.2	243.6	74.1	347.9	995.8	132.1	412.6	227.8	3 731.2
1993-94	1 474.8	360.6	415.7	165.1	439.5	144.4	539.9	652.1	4 192.0
1994-95	1 509.6	364.8	471.2	142.8	540.9	197.1	250.4	770.6	4 247.5
1994 -									
June qr	1 474.8	360.6	415.7	165.1	439.5	144.4	539.9	652.0	4 192.0
Sept qr	1 503.0	378.4	403.2	177.8	483.3	147.4	374.8	619.2	4 087.1
Dec qr	1 471.3	346.4	401.9	173.3	467.8	183.4	296.7	749.3	4 089.8
1995 -									
Mar qr r	1 466.0	352.4	472.8	153.7	534.0	171.9	268.2	709.2	4 128.3
Jun qr p	1 509.6	364.8	471.2	142.8	540.9	197.1	250.4	770.6	4 247.5
COMPLETED									
1992-93	2 411.7	583.5	289.7	380.5	1 565.1	222.2	107.4	237.6	5 797.7
1993-94	2 725.1	601.3	182.5	424.0	1 279.0	201.0	113.3	295.5	5 821.7
1994-95	2 832.8	694.2	311.6	250.6	500.7	227.2	385.7	306.1	5 508.8
1994 -									
June qr	683.5	151.6	45.2	39.6	262.4	37.7	23.2	90.9	1 334.1
Sept qr	715.1	152.0	69.2	56.6	86.3	45.0	177.7	83.9	1 385.8
Dec qr	853.1	223.6	94.9	73.2	146.8	70.1	112.6	68.7	1 643.0
1995 -									
Mar qr r	678.2	155.0	32.5	58.6	126.2	60.2	48.8	100.3	1 259.7
Jun qr p	586.3	163.6	114.9	62.2	141.4	51.9	46.6	53.3	1 220.3

# 17 STATEMENT OF BUDGET SECTOR TRANSACTIONS, VICTORIA<sup>1</sup>

	Budget Estimate 1994-95	Actual 11 months to 31.5.1995 \$m	Actual 11 months to 31.5.1994
<b>DEPARTMENTAL OUTLAYS</b>			
Agriculture, Energy and Minerals	149.5	107.2	78.8
Arts, Sport, and Tourism	291.0	196.7	189.3
Business and Employment	249.1	175.1	117.4
Conservation and Natural Resources	292.4	252.4	222.4
Education	3 351.3	3 038.0	2 863.0
Health and Community Services	4 083.8	3 645.6	3 484.0
Justice	1 250.5	1 206.1	893.5
Parliament	48.9	38.5	34.1
Planning and Development	544.5	360.3	305.1
Premier and Cabinet	43.5	35.0	34.6
Transport	1 464.1	1 220.4	1 323.9
Treasurer and Finance	2 799.2	1 956.4	3 975.8
Commonwealth Grants on-passed	<u>790.6</u>	<u>791.7</u>	<u>774.2</u>
	15 358.4	13 023.4	14 296.1
<i>less</i> Superannuation Contributions	342.6	267.9	0.0
Capital Charge Received	101.2	36.5	0.0
Payroll Tax Paid by Departments	<u>237.2</u>	<u>213.9</u>	<u>209.3</u>
<b>TOTAL DEPARTMENTAL OUTLAYS</b>	<b><u>14 677.4</u></b>	<b><u>12 504.9</u></b>	<b><u>14 086.6</u></b>
<i>Current Outlays</i>	13 667.0	11 873.4	13 165.2
<i>Capital Outlays</i>	1 010.4	631.5	921.4
<b>REVENUE</b>			
<b>Taxes, Fees and Fines</b>			
Payroll Tax	1 811.0	1 679.3	1 570.7
Stamp Duty on Financial and Capital Transactions	986.0	881.5	936.3
State Deficit Levy on rateable properties	181.0	158.5	163.3
Financial Institutions Transaction Taxes	557.7	508.3	493.4
Franchise Fees	1 084.3	961.8	970.2
Motor Vehicle Taxes	800.2	729.1	671.4
Land Taxes	387.7	358.9	265.2
Gambling Taxes	864.8	805.2	694.6
Public Authority Contribution	290.0	285.9	266.7
Taxes on Insurance	315.9	275.4	266.9
Other Taxes, Fees and Fines	<u>194.4</u>	<u>190.4</u>	<u>168.5</u>
Total Taxes, Fees and Fines	7 473.0	6 834.3	6 467.3
Interest Received	98.3	35.0	13.0
Royalties	49.2	45.8	43.4
Income from Public Trading and Financial Enterprises	655.0	721.8	664.0
Other State Revenue	<u>79.4</u>	<u>62.8</u>	<u>62.5</u>
Total Other Revenue	881.9	865.4	782.8
<b>GRANTS</b>			
Grants Received from Commonwealth	5 508.1	5 079.3	49 600.1
Commonwealth Grants for On-Passing	<u>790.6</u>	<u>793.9</u>	<u>778.1</u>
Total Grants	<u>6 298.7</u>	<u>5 873.2</u>	<u>5 738.2</u>
<b>TOTAL REVENUE AND GRANTS RECEIVED</b>	<b><u>14 653.6</u></b>	<b><u>13 572.9</u></b>	<b><u>12 988.3</u></b>
<b>FINANCING TRANSACTIONS</b>			
Net Advances from Commonwealth	-497.0	-419.3	-279.9
Other Net Borrowing	515.7	-1,109.1	1,723.4
Other, including changes in Cash Balances and Investments	<u>5.1</u>	<u>460.3</u>	<u>- 345.4</u>
<b>TOTAL FINANCING TRANSACTIONS</b>	<b><u>23.8</u></b>	<b><u>-1 068.1</u></b>	<b><u>1 098.3</u></b>

<sup>1</sup> This monthly statement of budget sector transactions (Niemeyer Statement) is presented in *Government Finance Statistics* format.  
Source: Treasurer of Victoria

# 18 PRIVATE NEW CAPITAL EXPENDITURE BY SELECTED INDUSTRIES AND TYPE OF ASSET, VICTORIA<sup>1</sup>

Period	Selected industries			Total	Type of asset	
	Mining	Manufacturing	Other selected industries \$m		New buildings and structures	Equipment, Plant, and Machinery
ACTUAL						
1992-93	282	2 183	3 162	5 627	1 397	4 230
1993-94	441	2 651	3 973	7 065	1 501	5 564
1993 -						
September qtr	91	623	1 032	1 746	404	1 342
December qtr	150	777	1 154	2 081	476	1 606
1994 -						
March qtr	114	546	823	1 483	294	1 189
June qtr	86	706	963	1 755	327	1 428
September qtr	83	731	1 092	1 907	309	1 598
December qtr	158	731	931	1 821	375	1 447
1995 -						
March qtr	139	708	923	1 769	353	1 416
EXPECTED						
1994-95	523	3 026	3 925	7 474	1 574	5 901
1995-96	813	2 895	3 259	6 967	1 911	5 056

<sup>1</sup> The series in this table are now classified to the Australian and New Zealand Standard Industrial Classification (ANZSIC).

# 19 COMMERCIAL FINANCE COMMITMENTS, VICTORIA

Period	Fixed loan facilities					Total	Type of lender			
	Construction	Purchase of real property	Purchase of plant and equipment	Wholesale	Other \$m		Revolving credit facilities	Total commitments	Banks	All other lenders
1994 -										
February	32.6	202.1	107.8	61.3	171.3	575.1	835.7	1 417.5	1 120.7	296.8
March	42.2	218.7	346.5	70.2	610.7	1 288.2	1 233.3	2 541.5	2 126.6	414.9
April	36.1	199.6	119.9	56.3	218.2	630.3	1 112.4	1 742.7	1 254.7	488.0
May	116.9	273.6	145.1	109.8	180.9	826.3	1 172.3	2 001.9	1 713.9	288.0
June	83.4	273.5	169.0	72.8	455.0	1 053.8	1 224.2	2 278.7	1 833.5	445.3
July	52.1	221.6	144.7	70.2	302.9	791.5	1 029.5	1 840.9	1 241.5	599.3
August	83.7	246.9	157.6	79.8	301.1	869.4	1 061.3	1 930.6	1 669.8	260.8
September	56.6	216.9	140.5	67.8	209.8	691.7	1 436.1	2 132.1	1 668.8	463.3
October	64.3	181.2	139.3	68.3	208.7	661.7	656.4	1 318.1	1 063.2	254.9
November	85.9	238.5	181.5	55.5	366.9	928.3	1 143.3	2 071.6	1 618.2	453.3
December	56.6	242.1	162.9	56.5	402.3	920.3	1 567.8	2 488.1	2 059.6	428.5
1995 -										
January	79.1	149.1	119.4	44.8	227.2	619.7	1 139.6	1 759.3	1 352.1	407.1
February	41.0	175.6	138.4	55.6	248.5	659.1	675.0	1 334.2	1 040.1	294.0
March	82.7	223.5	170.3	94.9	253.6	825.1	1 198.7	2 023.7	1 593.2	430.6
April	68.3	215.0	124.1	60.0	241.0	708.6	1 606.0	2 314.6	1 610.2	704.3
May	190.1	222.5	156.5	118.7	280.1	967.9	1 347.6	2 315.5	1 950.9	364.6
June	79.8	254.1	213.1	91.4	483.4	1 121.9	2 297.4	3 419.3	2 155.4	1 263.9
July	72.1	227.2	156.6	79.0	383.1	918.2	1 527.3	2 445.4	2 050.4	395.0
August	123.6	277.5	171.8	97.9	318.3	989.4	1 926.4	2 915.8	2 431.9	484.0

## 20 SECURED HOUSING FINANCE COMMITMENTS, VICTORIA

Period	Original Series		Seasonally Adjusted		Trend Estimates	
	Dwelling units	\$million	Dwelling units	\$million	Dwelling units	\$million
1994 -						
February	10 979	846	12 019	935	11 611	907
March	12 334	972	11 313	893	11 602	914
April	10 649	851	11 481	918	11 459	913
May	12 165	986	11 003	895	11 204	906
June	12 147	997	10 972	894	10 848	888
July	10 516	866	10 739	894	10 451	864
August	10 720	876	9 847	815	10 018	834
September	9 408	800	9 658	814	9 577	801
October	8 760	727	8 968	751	9 182	771
November	9 441	806	8 438	718	8 885	749
December	8 707	753	9 427	785	r8 634	731
1995 -						
January	6 188	526	7 732	664	r8 374	714
February	7 810	664	8 555	736	r8 078	r694
March	8 814	763	8 220	710	r7 809	r678
April	6 632	581	7 327	644	r7 633	r670
May r	8 091	727	6 613	596	7 581	672
June r	8 015	714	7 838	690	7 651	684
July r	8 056	721	8 163	745	7 804	702
August	9 046	806	8 369	749	7 935	717

## 21 RETAIL TURNOVER BY INDUSTRY (EXCLUDING MOTOR VEHICLES, PARTS, PETROL, ETC.), VICTORIA

Month	Food retailing	Department stores	Clothing and soft good retailing	Household good retailing	Recreational good retailing	Other retailing	Hospitality and services	Total
1994 -								
February	762.2	149.1	123.3	230.8	92.1	151.2	234.3	1 743.0
March	875.1	189.2	157.1	243.2	100.8	177.1	272.5	2 015.0
April	810.8	197.0	165.7	222.7	94.1	168.8	263.2	1 922.3
May	804.4	212.1	165.6	242.2	101.9	178.8	261.7	1 966.7
June	812.9	210.8	146.3	251.4	103.0	174.0	259.2	1 957.6
July	836.4	169.9	148.9	250.1	112.3	183.3	277.3	1 978.2
August	831.8	182.2	138.7	255.0	119.7	191.6	278.6	1 997.6
September	854.4	202.8	141.8	249.7	114.1	192.8	290.2	2 045.8
October	887.1	215.2	152.6	251.0	121.0	212.5	307.0	2 146.4
November	878.4	223.1	156.0	266.4	130.7	219.9	313.4	2 187.9
December	1 070.8	418.7	236.8	348.7	196.9	305.2	355.8	2 932.9
1995 -								
January	885.5	165.1	154.2	258.2	119.1	179.5	295.3	2 056.9
February	851.0	152.0	127.1	238.4	112.2	185.0	271.7	1 937.4
March	922.8	188.2	145.7	265.4	118.1	208.9	304.7	2 153.8
April	902.1	215.7	166.5	241.9	115.1	207.4	292.4	2 141.1
May	905.9	211.6	153.2	268.7	129.1	219.5	292.6	2 180.6
June	897.6	209.9	151.5	276.1	128.7	203.8	292.8	2 160.4
July	914.0	197.2	150.2	270.2	137.1	199.7	286.4	2 154.8
August	944.3	197.8	138.9	263.1	137.6	214.2	283.0	2 178.9
September	942.5	195.3	138.2	264.2	129.8	212.6	294.2	2 176.8

## 22 EXPORTS AND IMPORTS BY SECTIONS OF THE AUSTRALIAN EXPORT AND IMPORT COMMODITY CLASSIFICATIONS, VICTORIA

Section	1994-95		2 months ending August 1995	
	Imports	Exports	Imports	Exports
	\$m			
0 Food and live animals chiefly for food r	971	2 823	176	397
1 Beverages and tobacco r	182	75	24	16
2 Crude materials, inedible (except fuels) r	613	1 742	100	227
3 Mineral fuels, lubricants, and related materials r	503	440	89	127
4 Animal and vegetable oils, fats, and waxes r	75	84	14	10
5 Chemicals and related products, nec r	2 194	753	396	145
6 Manufactured goods classified chiefly by material r	3 909	2 228	736	405
7 Machinery and transport equipment r	10 435	2 076	1 986	366
8 Miscellaneous manufactured articles r	4 104	802	801	144
9 Commodities and transactions of merchandise trade, nec r	980	1 949	177	394
<b>Total</b>	<b>23 966</b>	<b>12 972</b>	<b>4 499</b>	<b>2 231</b>

## 23 OVERSEAS TRADE, MAJOR TRADING PARTNERS, VICTORIA<sup>1</sup>

Country	1993-94		1994-95		2 months ending August 1995	
	Imports	Exports	Imports	Exports	Imports	Exports
	\$m					
Belgium-Luxembourg	192	32	225	28	r 48	r 9
Brazil	132	37	167	60	r 31	r 8
Canada	292	148	430	110	r 91	r 15
China	1 415	481	1 576	560	r 314	r 48
Fiji	31	133	39	127	r 8	r 34
Finland	194	5	237	6	r 56	r 2
France	432	133	487	167	r 98	r 29
Germany	1 550	246	2 093	258	r 385	r 49
Hong Kong	209	532	205	563	r 45	r 112
India	171	107	224	115	r 46	r 29
Indonesia	324	242	335	267	r 85	r 53
Italy 501	594	186	718	259	r 152	r 34
Japan	3 779	2 177	3 987	1 852	r 712	r 274
Korea, Republic of	491	914	609	1 096	r 128	r 239
Malaysia	317	614	428	756	r 82	r 117
Mexico	48	110	55	61	r 9	r 2
Netherlands	199	32	229	43	r 37	r 6
New Zealand	1024	1 099	1 191	1 241	r 211	r 264
Pakistan	83	41	86	30	r 11	r 5
Papua New Guinea	92	211	125	187	r 8	r 30
Philippines	49	256	105	284	r 18	r 35
Saudi Arabia	173	133	242	127	r 37	r 21
Singapore	404	1 128	494	1 339	r 91	r 238
South Africa	71	115	73	192	r 15	r 34
Sweden	408	22	495	39	r 112	r 8
Switzerland	250	29	302	58	r 49	r 10
Taiwan	747	522	811	629	r 144	r 103
Thailand	261	350	323	439	r 58	r 68
United Kingdom	1 229	339	1 365	365	r 286	r 56
United States of America	4 696	918	5 260	365	r 937	r 120
Other and unknown	913	1 038	1 052	940	r 195	r 179
<b>Total</b>	<b>20 770</b>	<b>12 329</b>	<b>23 968</b>	<b>12 952</b>	<b>4 499</b>	<b>2 231</b>

<sup>1</sup> The list of countries in this table reflects the volume of trade with Victoria. Information about Victoria's trade with other countries is available on request.

## 24 VALUE OF OVERSEAS TRADE, VICTORIA AND AUSTRALIA

Period	Victoria			Australia		
	Imports	Exports	Excess of exports	Imports	Exports (incl. re-exports)	Excess of exports
	\$m					
1992-93	18 147	11 044	-7 103	59 575	60 702	+1 127
1993-94 r	20 770	12 322	-8 448	64 470	64 548	+78
1994-95 r	23 966	12 972	-10 994	74 620	66 984	-7 636
1994 -						
March	1 890	1 118	-772	5 850	r5 673	r-177
April r	1 600	968	-632	5 033	5 223	+190
May r	1 784	1 164	-620	5 545	5 880	+335
June	1 670	r 959	r -711	5 430	5 278	-152
July r	1 881	960	-921	5 775	5 424	-351
August r	2 145	941	-1 204	6 662	5 323	-1 339
September r	1 915	984	-931	6 010	5 327	-683
October r	2 062	1 038	-1 024	6 290	5 774	-516
November r	2 101	1 142	-959	6 406	5 762	-644
December r	1 891	1 156	-735	5 833	5 543	-290
1995 -						
January r	1 882	1 033	-849	6 098	4 901	-1 197
February r	1 826	1 181	-645	5 565	5 150	-115
March r	2 168	1 206	-962	6 762	6 193	-569
April r	1 771	1 040	-731	5 749	5 651	-98
May	2 223	1 164	-1 059	6 906	r6 189	r-717
June r	2 100	1 124	-976	6 565	5 748	-817
July r	2 266	1 120	-1 146	6 867	6 284	-583
Aug	3 075	1 110	-1 965	6 844	6 101	-743

## 25 TOURIST ACCOMMODATION

Period	Hotels, motels, etc. with facilities				Short-term caravan parks			
	No. of establishments	Capacity (No. of guest rooms)	Room occupancy rates (%)	Takings from accommodation (\$'000)	No. of establishments	Capacity (No. of sites and cabins)	Site occupancy rates (%)	Takings from accommodation (\$'000)
MELBOURNE STATISTICAL DIVISION								
1993 -								
March qr	248	14 817	55	73 860	49	5 417	58	1 561
June qr	250	14 928	51	70 420	48	5 378	48	1 182
Sept qr	249	15 085	50	67 677	50	5 468	46	1 646
Dec qr	242	14 956	58	79 496	50	5 443	54	1 855
1994 -								
March qr	241	14 824	60	80 798	49	5 417	59	1 801
June qr	242	14 830	57	73 416	50	5 442	47	1 147
Sept qr	238	14 721	59	79 369	54	5 742	45	1 716
Dec qr	240	14 843	66	93 034	53	5 709	55	2 012
1995 -								
March qr	240	14 905	68	94 245	53	5 694	59	2 055
June qr	242	14 315	63	86 538	r53	r5 734	47	1 364
TOTAL VICTORIA								
1993 -								
March qr	1 040	29 944	48	107 633	444	53 935	45	16 443
June qr	1 051	30 278	45	101 757	445	54 351	37	10 038
Sept qr	1 043	30 316	43	100 636	436	53 422	34	9 914
Dec qr	1 025	30 265	48	110 502	442	53 601	39	13 469
1994 -								
March qr	1 017	29 988	51	115 454	441	54 052	45	17 183
June qr	1 018	29 968	48	105 846	441	53 971	38	10 268
Sept qr	1 003	29 680	48	113 668	438	53 831	35	10 602
Dec qr	1 006	29 892	53	127 072	436	53 377	40	14 503
1995 -								
March qr	1 003	r29 973	56	131 900	435	53 307	47	17 781
June qr	1 016	29 543	51	120 636	r434	r53 195	39	10 670





## *For more information ...*

The ABS publishes a wide range of statistics and other information on Australia's economic and social conditions. Details of what is available in various publications and other products can be found in the *ABS Catalogue of Publications and Products* available at all ABS Offices (see below for contact details).

### **Information Consultancy Service**

Information tailored to special needs of clients can be obtained from the Information Consultancy Service available at ABS Offices (see Information Inquiries below for contact details).

### **National Dial-a-Statistic Line**

0055 86 400

(Steadycom P/L, premium rate 25c/21 4 secs.)

This number gives 24-hour access, 365 days a year, for a range of statistics.

### **Electronic Data Services**

A large range of data is available via on-line services, diskette, magnetic tape, tape cartridge and CD ROM. For more details about these electronic data services, contact any ABS Office (see below).

### **Bookshops and Subscriptions**

There is a large number of ABS publications available from ABS bookshops (see below Bookshop Sales for contact details). The ABS also provides a subscription service through which nominated publications are supplied by mail on a regular basis (telephone Subscription Service toll free on 1800 02 0608 Australia wide).

## *Sales and Inquiries*

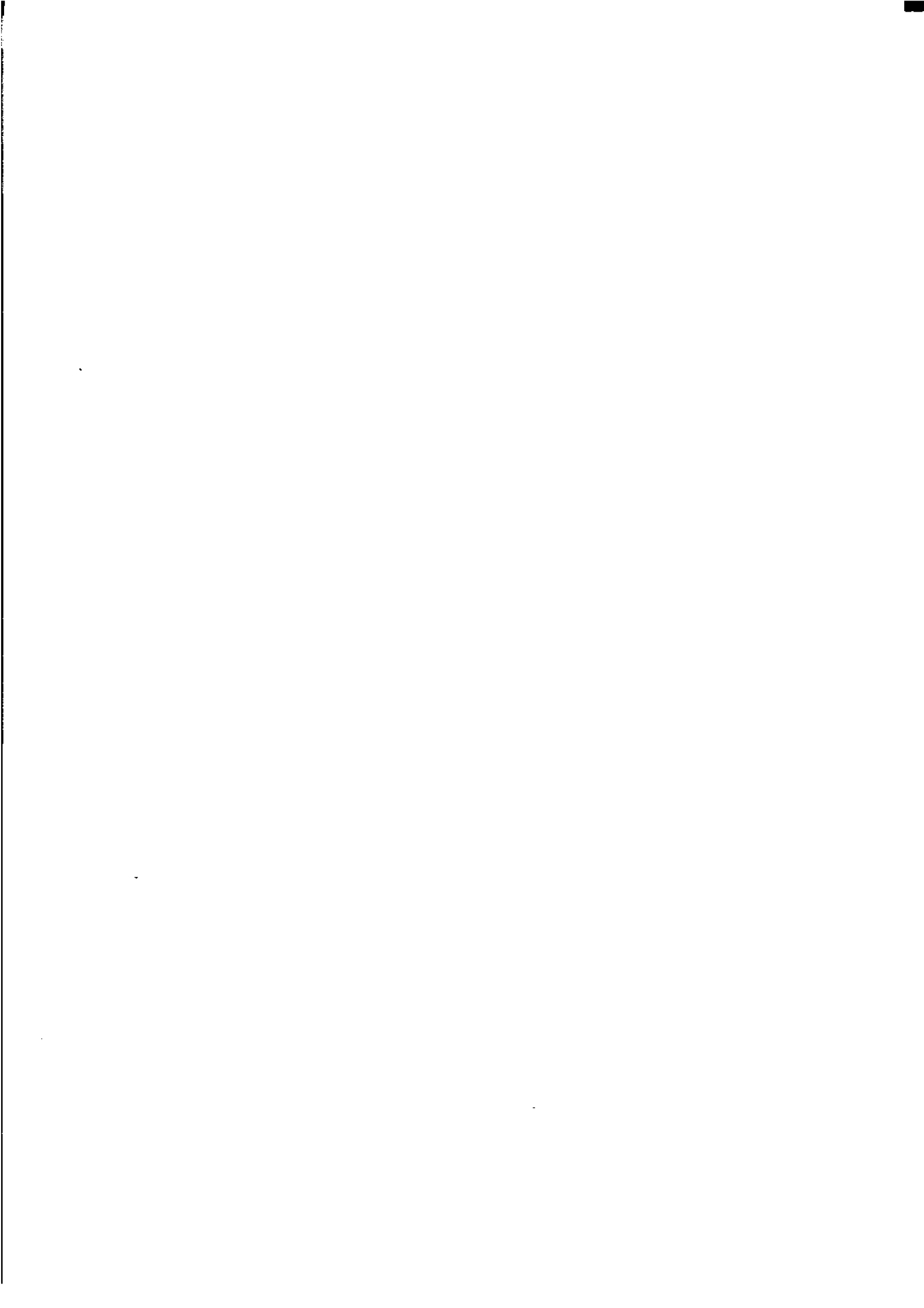
<b>Regional Offices</b>	<b>Information Inquiries</b>	<b>Bookshop Sales</b>
SYDNEY (02)	268 4611	268 4620
MELBOURNE (03)	9615 7000	9615 7829
BRISBANE (07)	3222 6351	3222 6350
PERTH (09)	360 5140	380 5307
ADELAIDE (08)	237 7100	237 7582
HOBART (002)	20 5800	20 5800
CANBERRA (06)	207 0326	207 0326
DARWIN (089)	43 2111	43 2111
<b>National Office</b>		
ACT (06)	252 6007	1800 02 0608

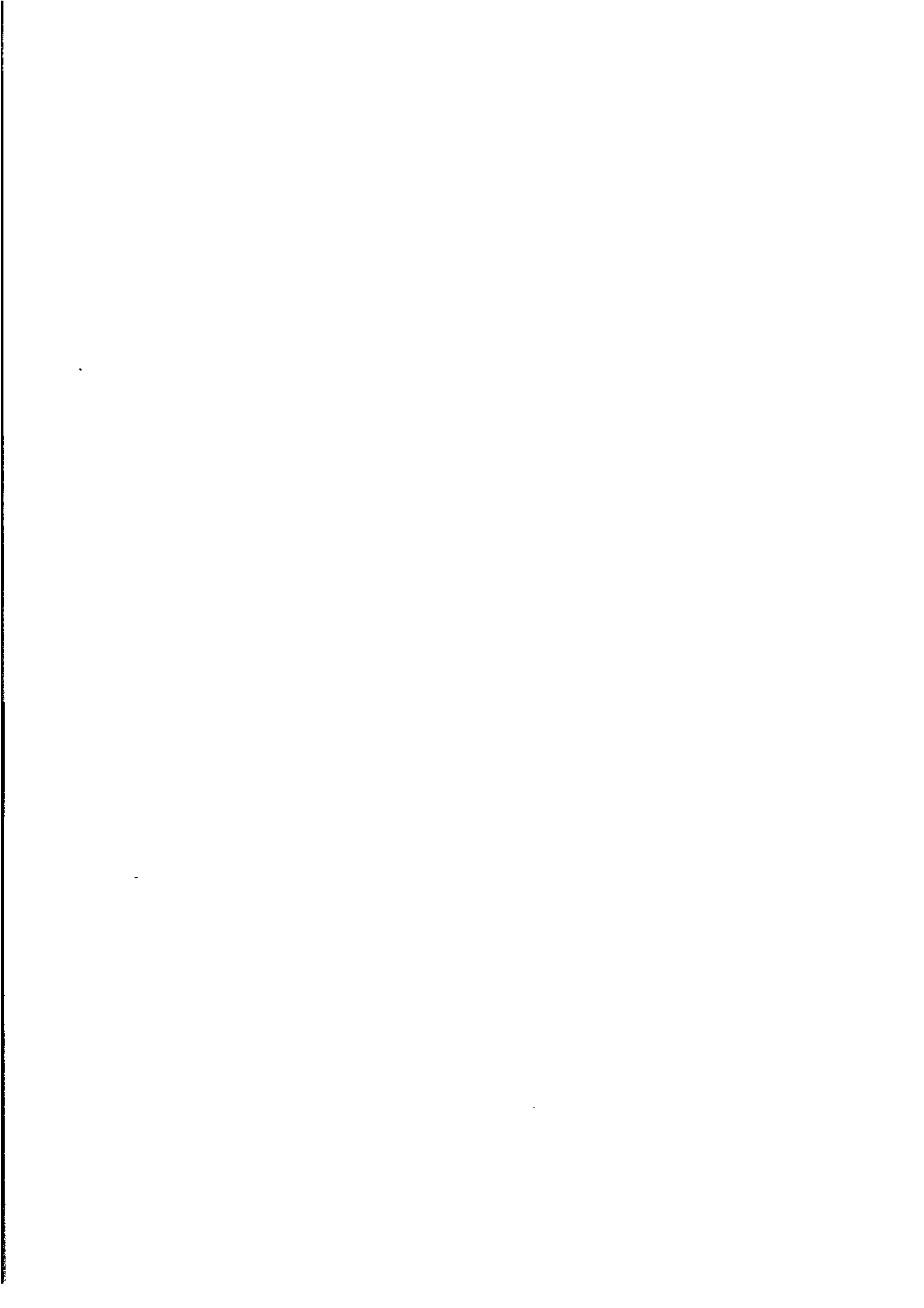
### **ABS Email Addresses**

Keylink	STAT.INFO/ABS
X.400	(C:AU,A:TELMEMO,O:ABS,SN:INFO,FN:STAT)
Internet	STAT.INFO@ABS.TELEMEMO.AU



Information Services, ABS, PO Box 10, Belconnen ACT 2616







2130320010958  
ISSN 0158-202X